

Maintenance Technology Specialist

Measure • Analyze • Improve

MONITA MARINE

Vessel Monitoring System

1

Measure Vessel Parameters and Movement

2

Analyze Vessel Activities and Performance

3

Improve Cost Efficiency and Safety

Engine Parameters Monitoring | Fuel & Tank Level Monitoring | Position Tracking | Weather Condition Information



daunbiru
Engineering

Maintenance Technology Specialist

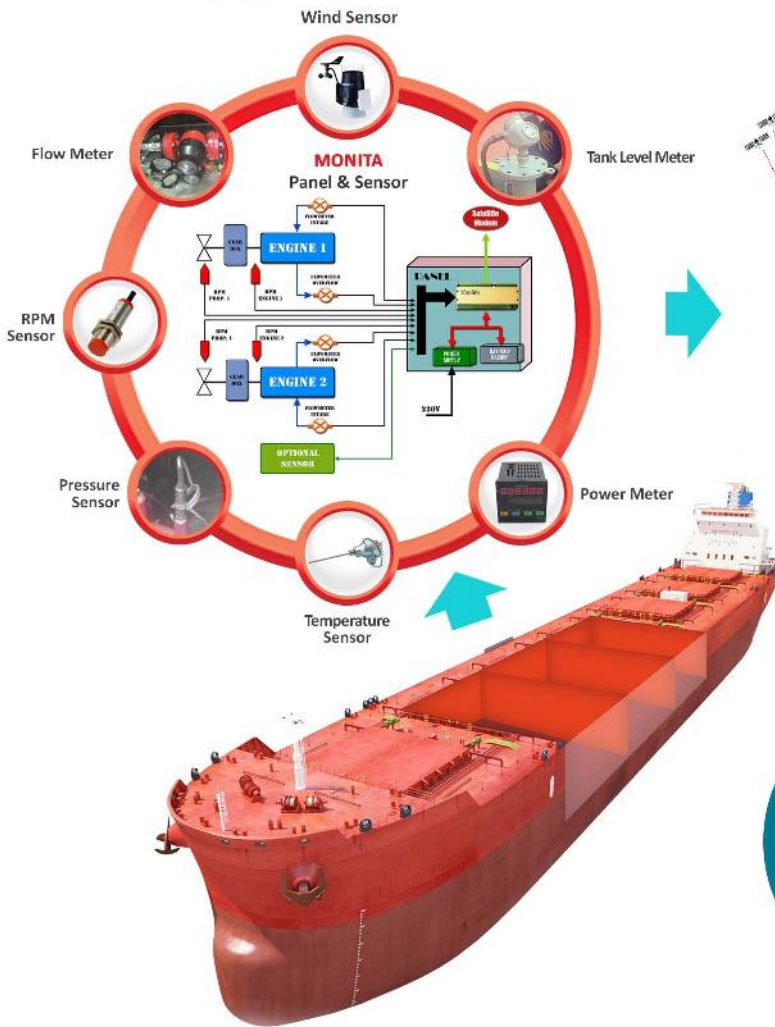


PRODUK INDONESIA
KELAS DUNIA



- Vessels are expensive assets and operate in remote areas.
- Operational activities that are not properly measured can result in high operational costs, maintenance, and safety risks.
- To improve efficiency and safety, a monitoring system that is up-to-date, accurate and accountable is required.

1 Data Acquisition

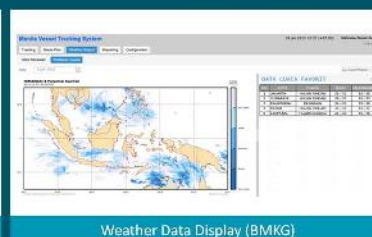
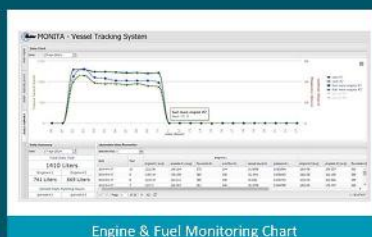
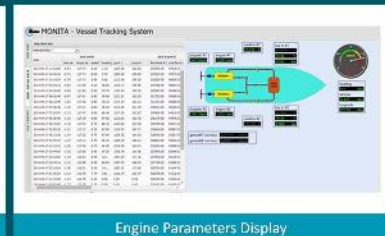
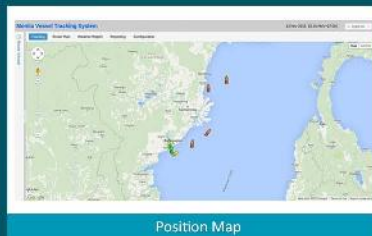


2 Data Transceiver



3 Application System

Monita Marine is an integrated marine ship management system to meet the needs of shipping companies /marine operations.



TECHNICAL SPECIFICATION

Monita Hybrid Module

- Size: 200 x 98 x 23 mm (L x W x H)
- Weight: 400 gr
- Power supply: 11 - 30 V_{DC}
- Power consumption: 100 mA at 12 V_{DC}
- 10 analog inputs (4-20 mA)
- 10 digital inputs (0-24 V_{DC})
- Cascadable
- 2GB SD-Card for up to 60 days of data

Enclosure/Panel

- ATEX (standard)
- IP66 (optional)
- Battery: 24 Volt, 12 Ah. Up to 48 hours of power backup
- Panic Button/SOS (optional)

Satellite Modem

- Compatible with multi platform
 - Inmarsat satellite (standard)
 - Iridium satellite (optional)
- Compatible with multimode Modem (Hybrid: GPRS/Satellite)

Sensors

- Flow Meter
 - Compatible with:
 - PD flow meter
 - Coriolis/mass flow meter (optional)
- RPM Sensor
 - Proximity sensor
 - Installed separately from existing engine RPM monitoring
- Auxiliary Running-hour sensor
 - Detection via voltage/current output
 - Installation without interrupting existing setting
- Anemometer (optional)
 - Data: Wind velocity and direction (relative to vessel)
 - Connection via modbus



SOFTWARE SPECIFICATION

Server & Web Based Application

- Globally accessible
- Reliable servers with backup data
- Linux based servers
- HTTPS certificate (SSL)
- With back up data server
- Security: MD5 encryption
- AES-128 transmission
- User access control (admin, operator)

Map Tracking Function

- Pan & zoom
- Auto refresh (1-30 minutes)
- Vessel location and tracking
- 24 hours track - log display
- Data stored up to 3 years

Vessel Management

- Vessel equipment properties setting/edit
- HMI display for vessel equipment layout (Visualization)

Equipment Customization

- Fuel monitoring, up to 10 points
- RPM monitoring, up to 10 points
- Auxiliary Engine Running-Hour, up to 3 points
- Analog input (fuel pressure, temperature, etc)
- Anemometer input for real time weather overview

Data Processing

- Hourly and daily display of fuel usage, RPM
- Graphic plot and trending
- Alert display
- ASTM/API gravity calculation (if temperature and pressure sensors installed)

Document Export

- Excel document
- PDF document
- XML-Web-API (application-to-application)
- Text file: ASCII or CSV
- Auto transmission report: email, FTP



PRODUCT PACKAGE

Sensor

- RPM sensor
- Flow meter
- Level meter
- Others (optional)

Panel and Module

- Monita Module
- ATEX panel (standard)
- IP66 panel (optional)

Satellite Modem

- Inmarsat Satellite + GPRS (standard)
- Inmarsat Satellite only (optional)
- Data transmission periode: every 30 minutes

Web Application Service

- Up to 5 users per customer account (with different level)

BENEFIT

- Provide location information, actual conditions, accurate and accountable
- Optimize travel routes and fuel consumption
- Increase operational cost efficiency
- Increase safety factors towards Zero Accident
- History record as a reference for continuous improvement

PT. Daun Biru Engineering

Jl. Raya Pekapuran No.41 Tapos, Depok 16455 - Indonesia

Phone +62-21 87743652, +62-21 87743615

Fax +62-21 87743634

www.daunbiru.co.id | Sales@daunbiru.com

2025-04.B-MM.08